

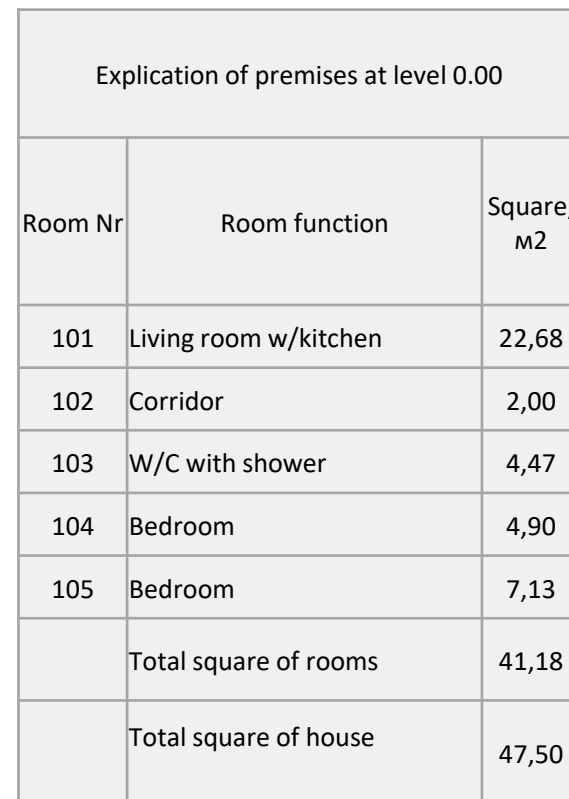


Model line

---









Main Facade





Left view





Right view







Rare view



Wooden finishing options





Roofing options





Extended tent option



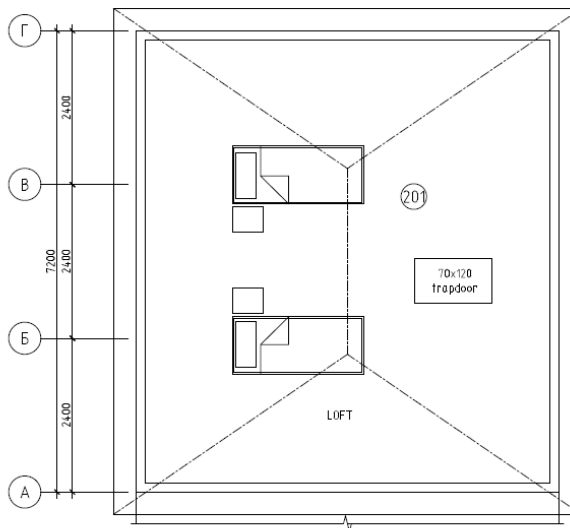
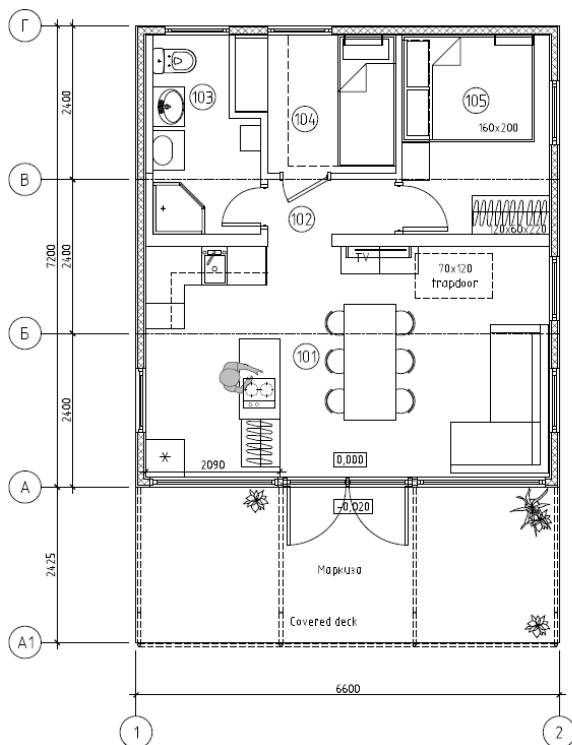












Explication of premises at level 0.00

| Room Nr               | Room function         | Square, м2 |
|-----------------------|-----------------------|------------|
| 101                   | Living room w/kitchen | 22,68      |
| 102                   | Corridor              | 2,00       |
| 103                   | W/C with shower       | 4,47       |
| 104                   | Bedroom               | 4,90       |
| 105                   | Bedroom               | 7,13       |
| 201                   | Attic                 | 15,00      |
| Total square of rooms |                       | 41,18      |
| Total square of house |                       | 47,50      |



Main Facade





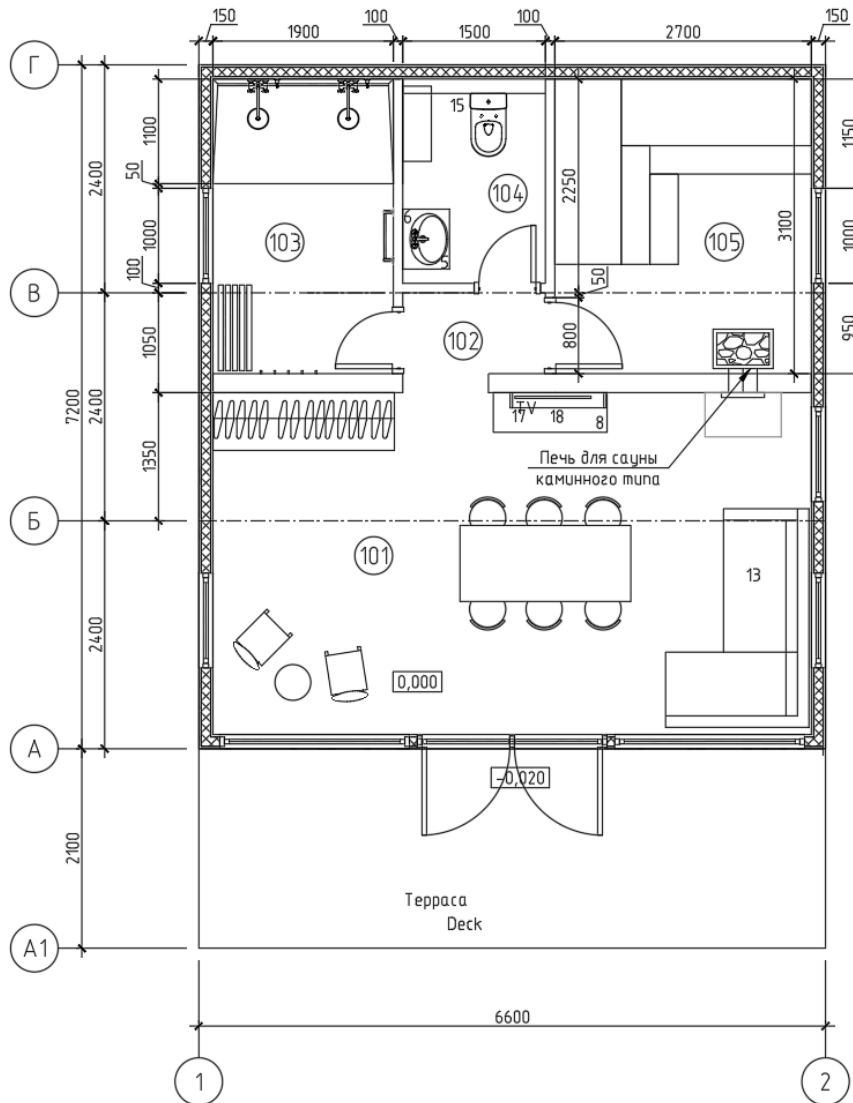
Additional view











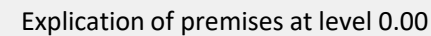
Explication of premises at level 0.00

| Room Nr               | Room function         | Square, m2 |
|-----------------------|-----------------------|------------|
| 101                   | Living room w/kitchen | 22,68      |
| 102                   | Corridor              | 1,46       |
| 103                   | Shower                | 5,89       |
| 104                   | W/C                   | 3,23       |
| 105                   | Sauna                 | 8,37       |
| Total square of rooms |                       | 41,6       |
| Total square of house |                       | 47,50      |









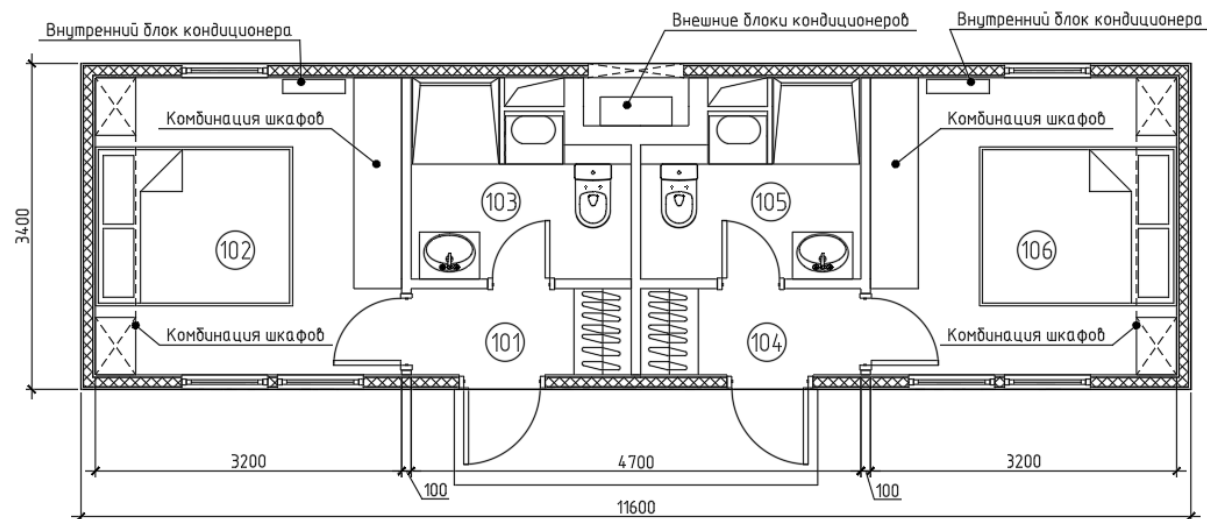
| Room Nr | Room function           | Square, m <sup>2</sup> |
|---------|-------------------------|------------------------|
| 101     | Chilling room w/kitchen | 16,99                  |
| 102     | Corridor                | 4,62                   |
| 103     | W/C                     | 2,02                   |
| 104     | Shower                  | 3,00                   |
| 105     | Sauna                   | 7,13                   |
|         | Total square of rooms   | 33,77                  |
|         | Total square of house   | 40,8                   |







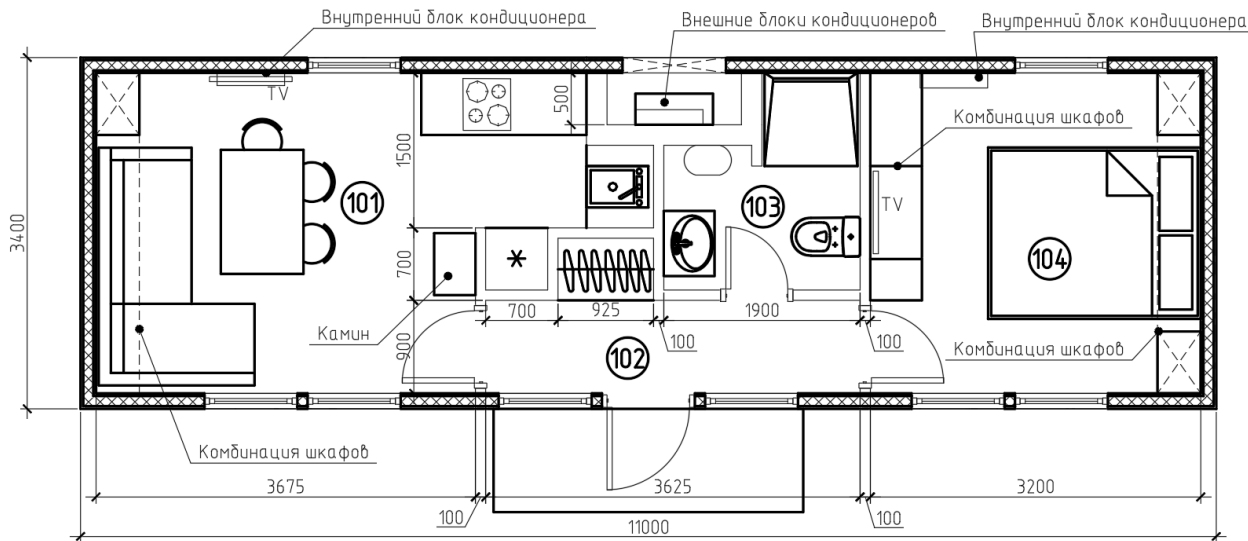




Explication of premises at level 0.00

| Room Nr               | Room function | Square, м2 |
|-----------------------|---------------|------------|
| 101                   | Hall          | 2,07       |
| 102                   | Bedroom       | 9,92       |
| 103                   | W/C           | 4,08       |
| 104                   | Hall          | 2,07       |
| 105                   | Bedroom       | 9,92       |
| 106                   | W/C           | 4,08       |
| Total square of rooms |               | 32,10      |
| Total square of house |               | 39,4       |





Explication of premises at level 0.00

| Room Nr               | Room function         | Square, м2 |
|-----------------------|-----------------------|------------|
| 101                   | Living room w/kitchen | 13,89      |
| 102                   | Corridor              | 3,26       |
| 103                   | W/C                   | 3,31       |
| 104                   | Bedroom               | 9,92       |
| Total square of rooms |                       | 30,4       |
| Total square of house |                       | 37,4       |

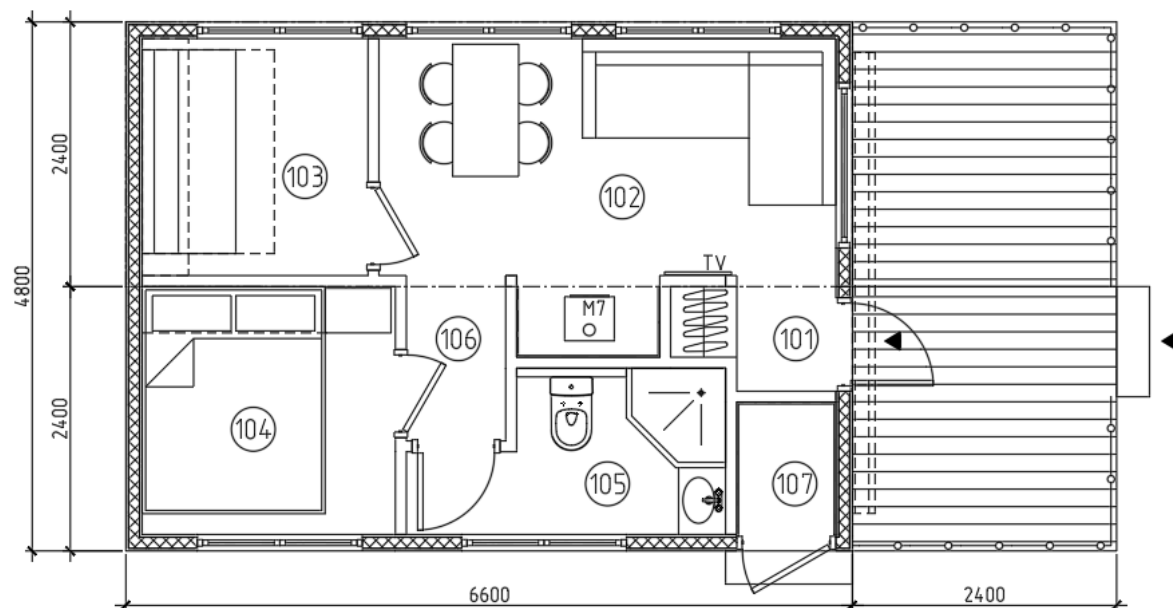








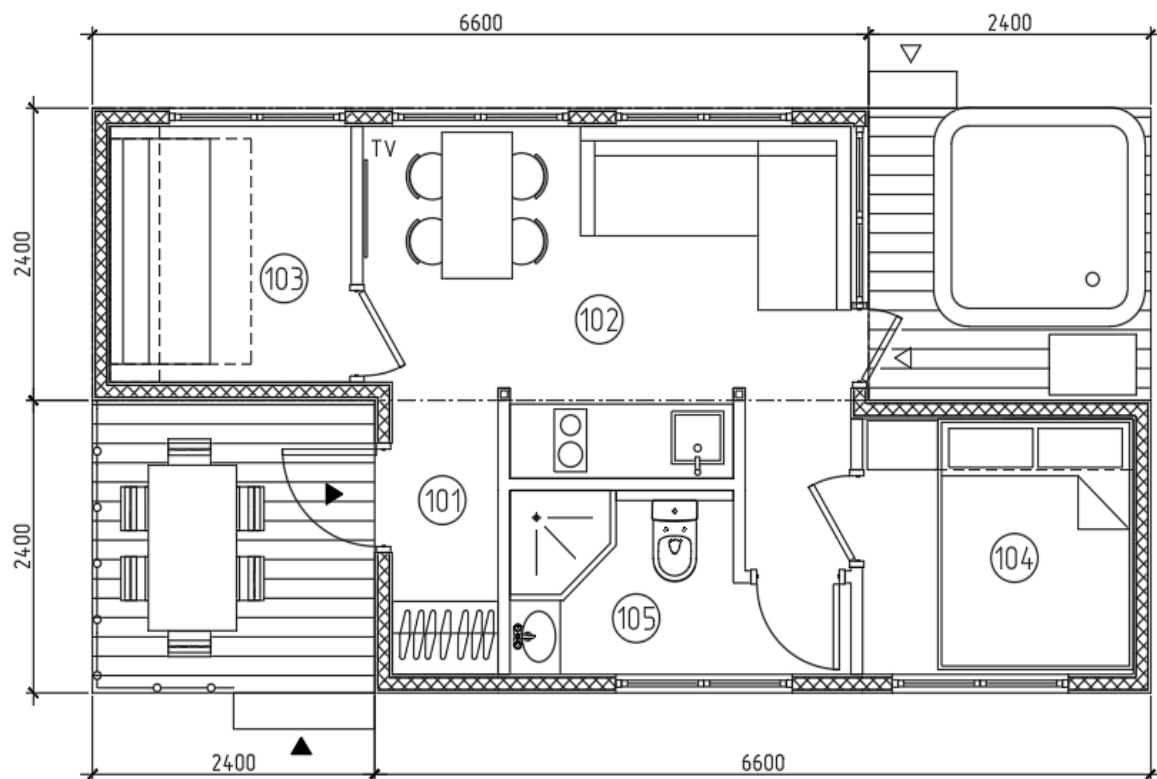




Explication of premises at level 0.00

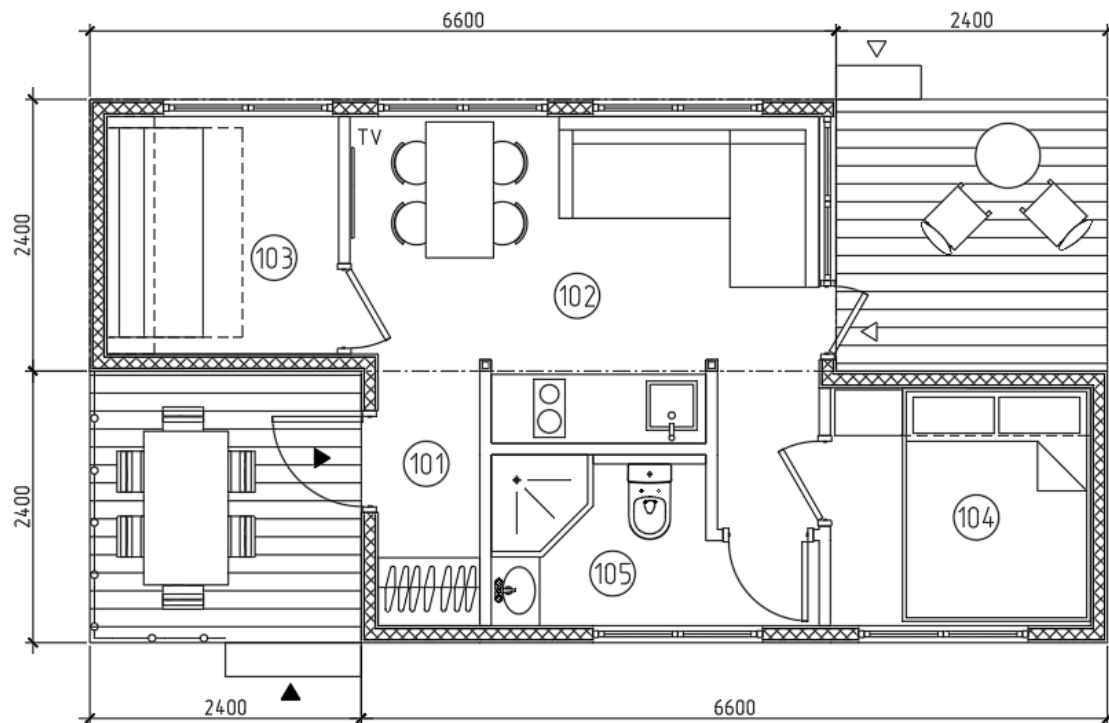
| Room Nr               | Room function  | Square, м2 |
|-----------------------|----------------|------------|
| 101                   | Hallway        | 1,24       |
| 102                   | Living room    | 10,06      |
| 103                   | Bedroom        | 4,41       |
| 104                   | Bedroom        | 5,18       |
| 105                   | W/C            | 3,62       |
| 106                   | Corridor       | 1,26       |
| 107                   | Technical room | 1,08       |
| Total square of rooms |                | 26,8       |
| Total square of house |                | 31,7       |





Explication of premises at level 0.00

| Room Nr                  | Room function            | Square, м2 |
|--------------------------|--------------------------|------------|
| 101                      | Hallway                  | 2,03       |
| 102                      | Living room with kitchen | 11,81      |
| 103                      | Bedroom                  | 4,30       |
| 104                      | Bedroom                  | 4,83       |
| 105                      | W/C                      | 3,62       |
| Total square of rooms    |                          | 26,59      |
| Total square of terraces |                          | 11,5       |
| Total square of house    |                          | 31,7       |



Explication of premises at level 0.00

| Room Nr                  | Room function            | Square, м2 |
|--------------------------|--------------------------|------------|
| 101                      | Hallway                  | 2,03       |
| 102                      | Living room with kitchen | 11,81      |
| 103                      | Bedroom                  | 4,30       |
| 104                      | Bedroom                  | 4,83       |
| 105                      | W/C                      | 3,62       |
| Total square of rooms    |                          | 26,59      |
| Total square of terraces |                          | 11,5       |
| Total square of house    |                          | 31,7       |







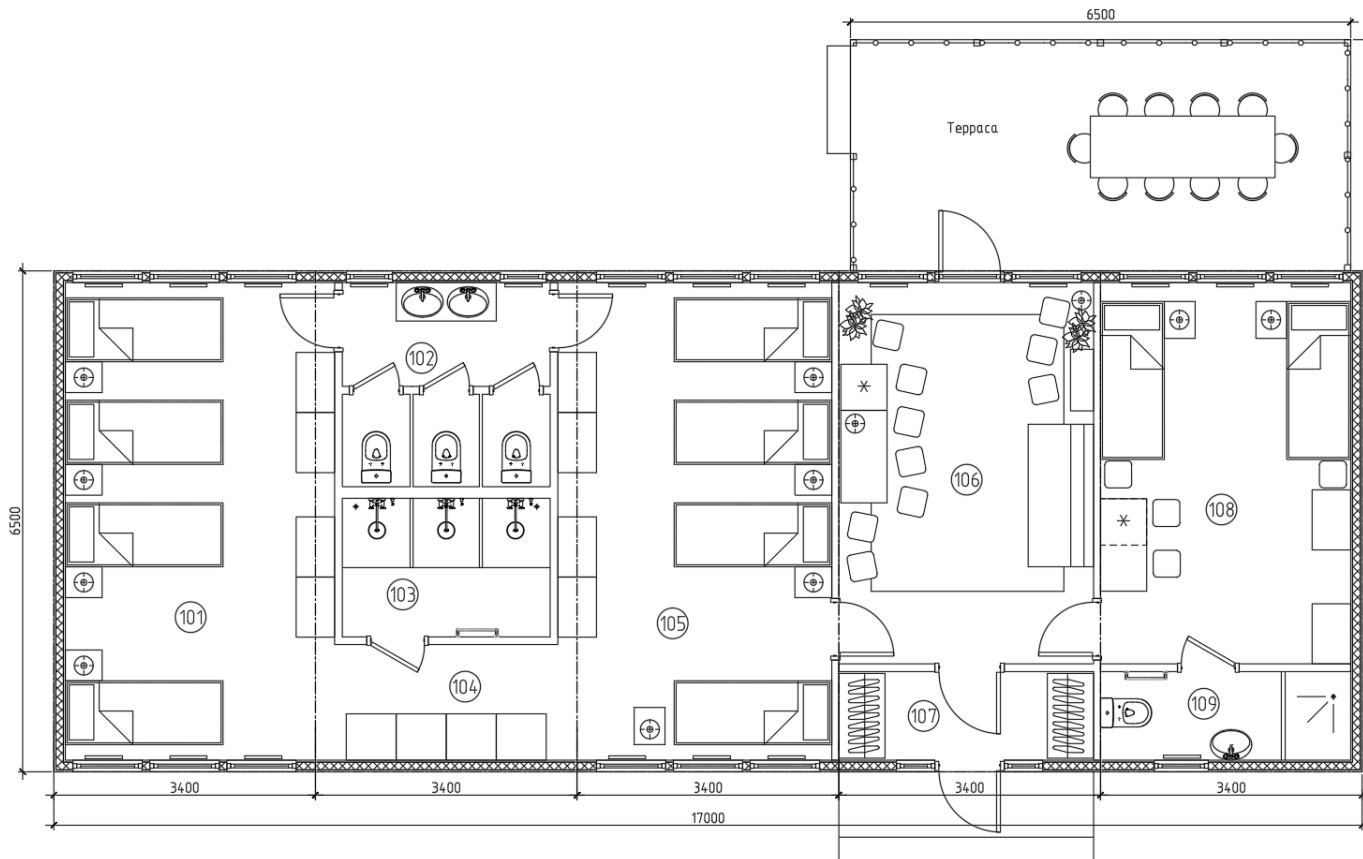












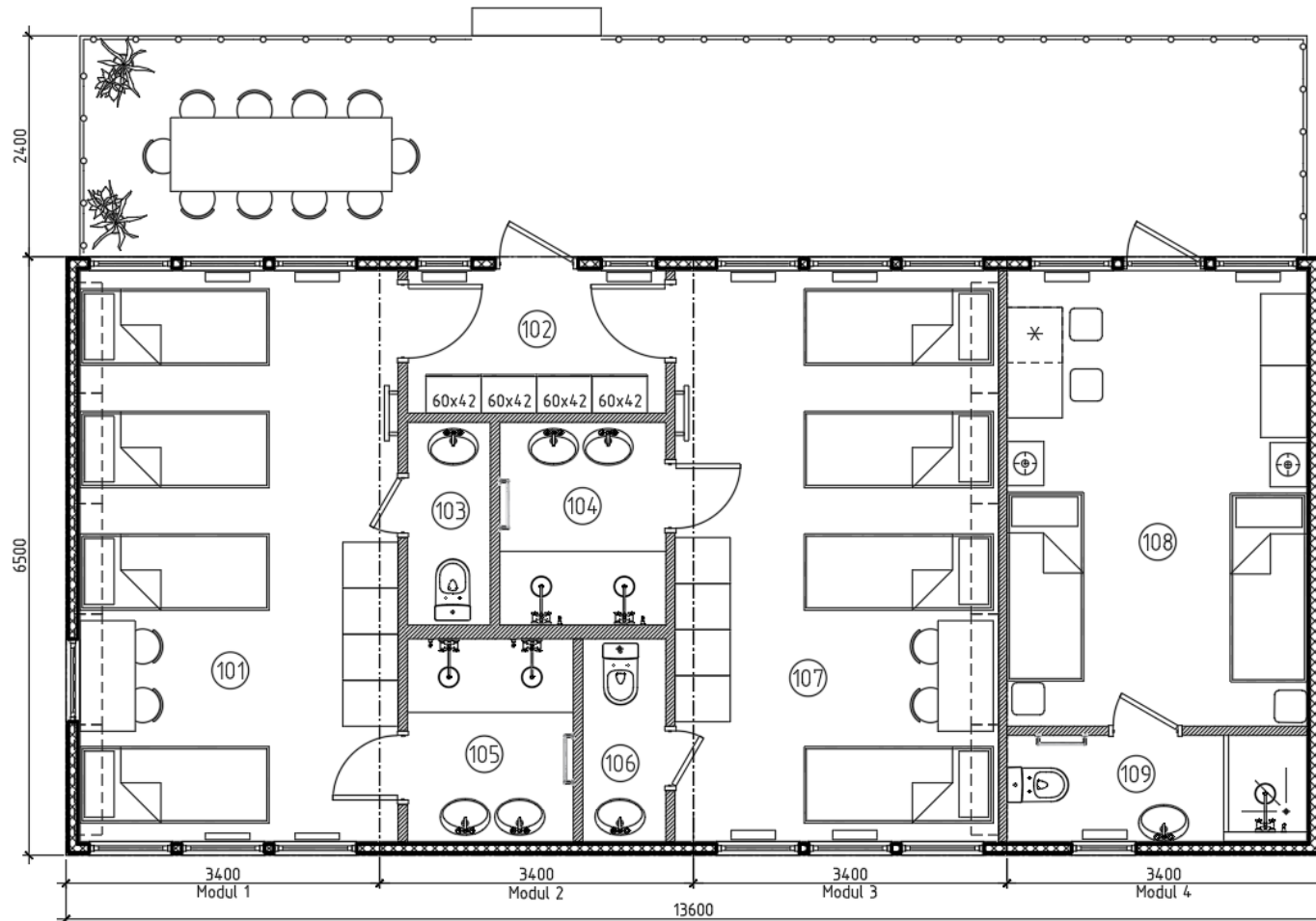
Explication of premises at level 0.00

| Room Nr                  | Room function        | Square, m2 |
|--------------------------|----------------------|------------|
| 101                      | Bedroom for 4 people | 21,39      |
| 102                      | W/C                  | 7,16       |
| 103                      | Shower               | 4,86       |
| 104                      | Corridor             | 4,36       |
| 105                      | Bedroom for 4 people | 22,07      |
| 106                      | Living room          | 1,98       |
| 107                      | Tambour              | 3,81       |
| 108                      | Room for coaches     | 16,09      |
| 109                      | W/C                  | 3,73       |
| Total square of rooms    |                      | 85,75      |
| Total square of house    |                      | 110,50     |
| Total square of terraces |                      | 19,50      |









Explication of premises at level 0.00

| Room Nr                  | Room function        | Square, m <sup>2</sup> |
|--------------------------|----------------------|------------------------|
| 101                      | Bedroom for 4 people | 21,39                  |
| 102                      | Tambour              | 4,34                   |
| 103                      | W/C                  | 1,98                   |
| 104                      | Shower               | 3,96                   |
| 105                      | Shower               | 3,96                   |
| 106                      | W/C                  | 1,98                   |
| 107                      | Bedroom for 4 people | 21,76                  |
| 108                      | Room for coaches     | 16,09                  |
| 109                      | W/C                  | 3,74                   |
| Total square of rooms    |                      | 79,20                  |
| Total square of house    |                      | 88,40                  |
| Total square of terraces |                      | 32,00                  |





## Interior Solutions

---





Living room interior





Living room interior







Bedrooms interiors















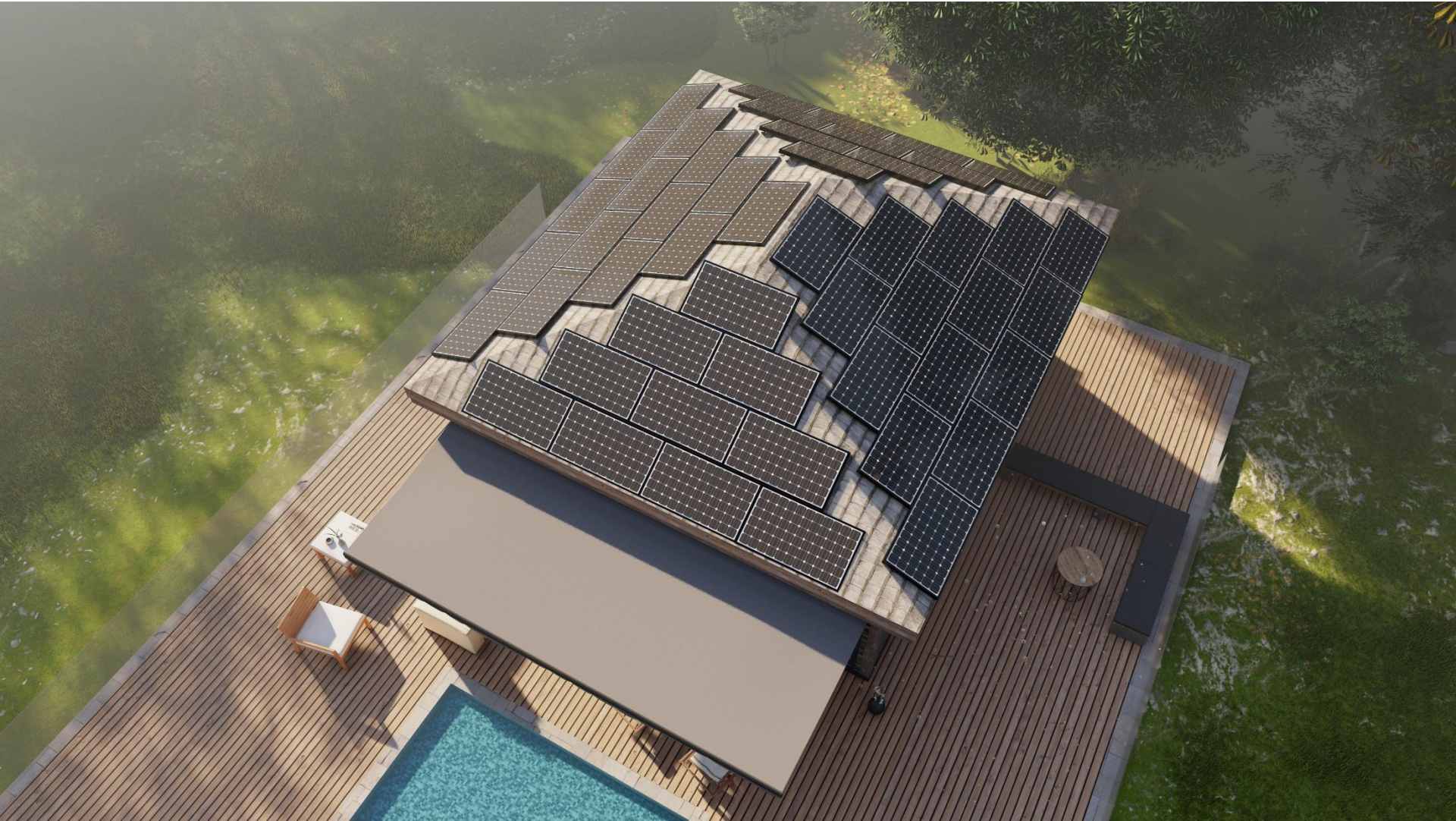


## Energy efficient mobile complexes

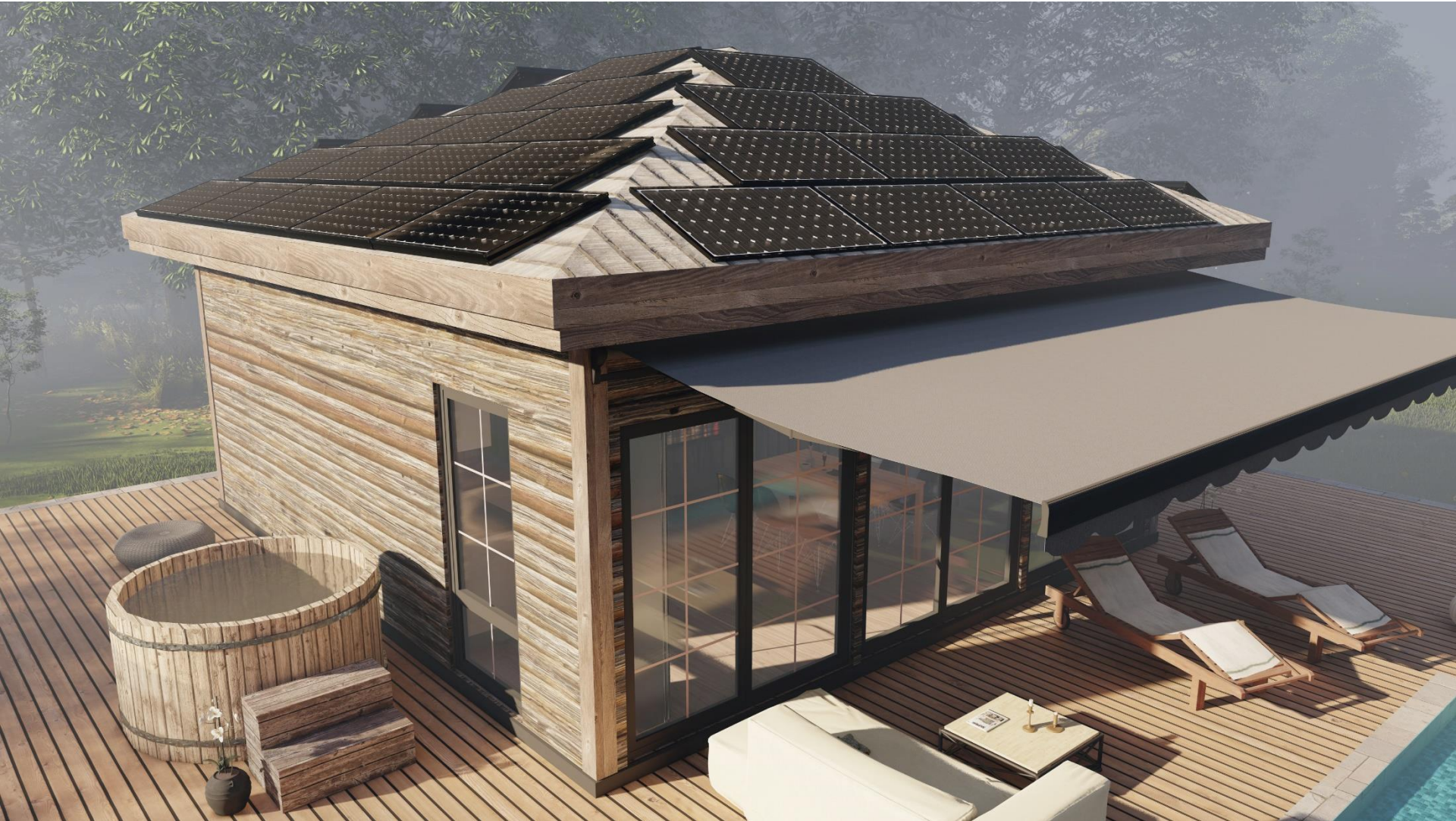
---



























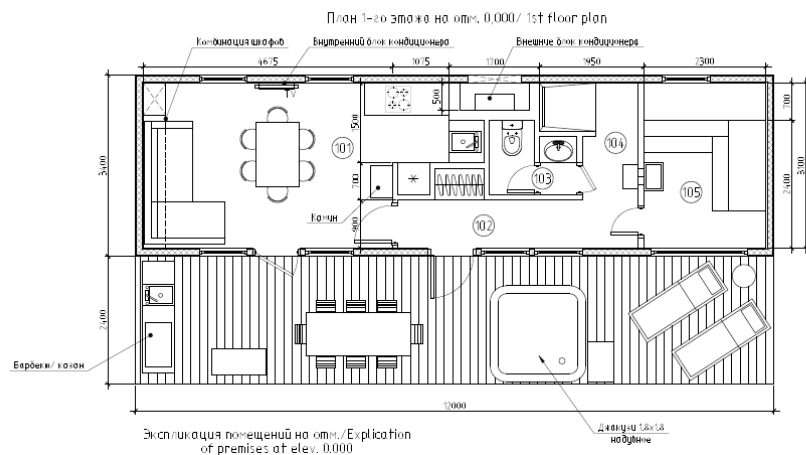


## SPA and Sauna complexes

---

### TYPE 1: Mobile House w/o Accommodation

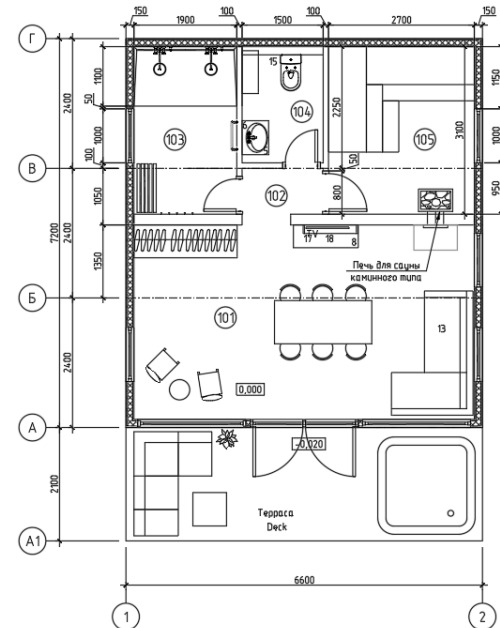
- Chilling zone (inside)
- Sauna (inside)
- Hot tube and jacuzzi (outside)
- Private patio
- Barbeque zone





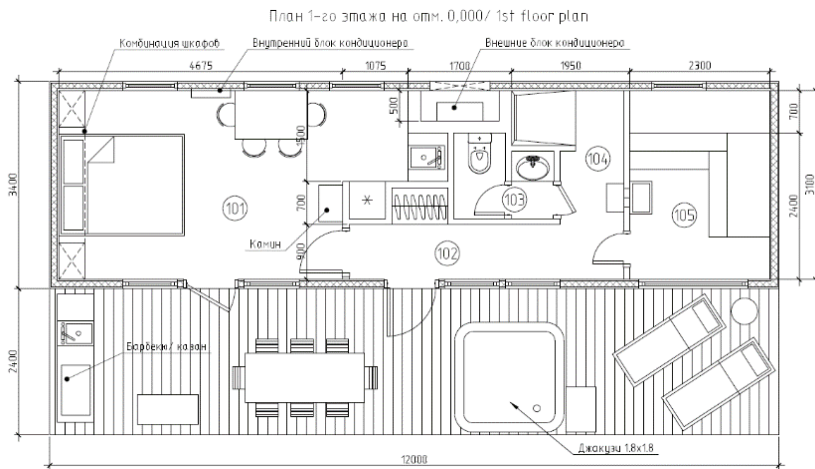
## TYPE 2: Mobile House w/o Accommodation

- Chilling zone (inside)
- Sauna (inside)
- Hot tube and jacuzzi (outside)
- Private patio
- Barbeque zone



## TYPE 3: 1 floor Mobile House with Accommodation

- Chilling zone (inside)
- Sauna (inside)
- Hot tube and jacuzzi (outside)
- Private patio
- Barbeque zone

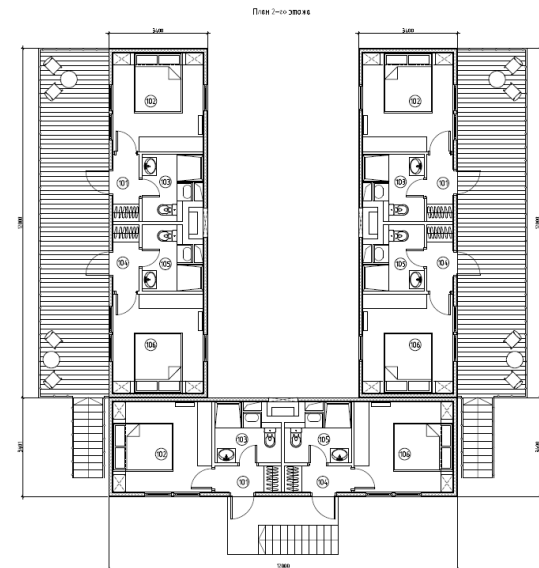
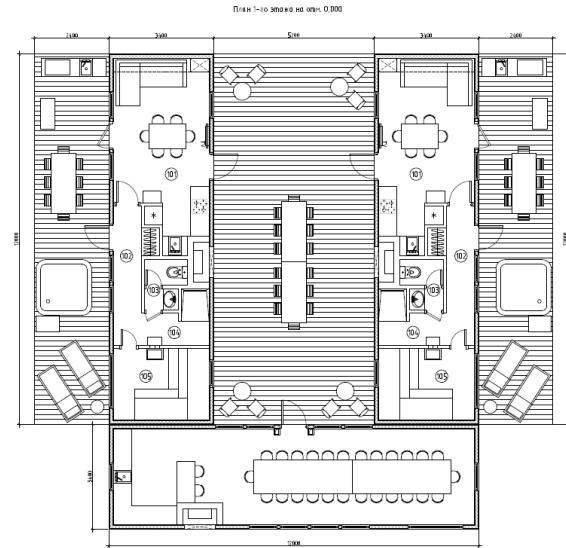




## TYPE 4: 2 floors Mobile House with Accommodation

- Chilling zone (inside)
- Sauna (inside)
- Hot tube and jacuzzi (outside)
- Private patio
- Barbeque zone

It is possible to combine various types of MH-s to get integral complex



## Multifunctional complexes

---



## Multifunctional complex of modular mobile houses

- Area for the shops and retail stores
- Area for the mountain skiing schools
- Events area
- Street food area
- Bars zone
- Kids activities area









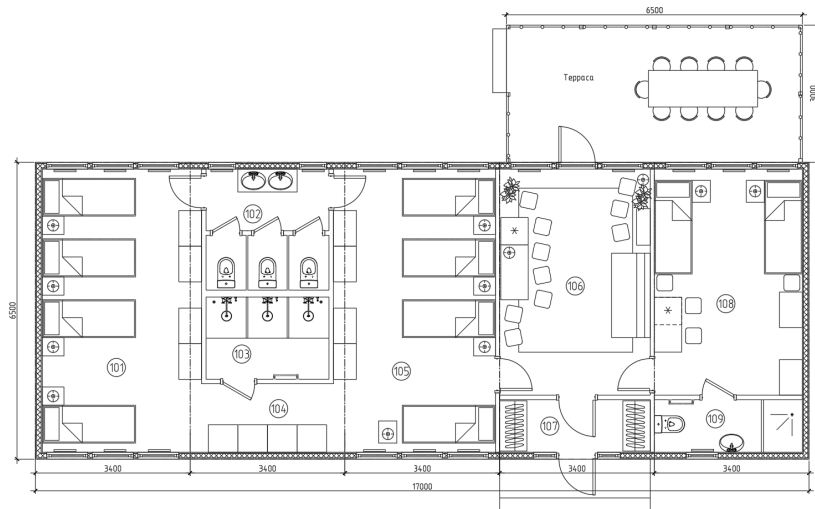
## Service accommodation complexes

---



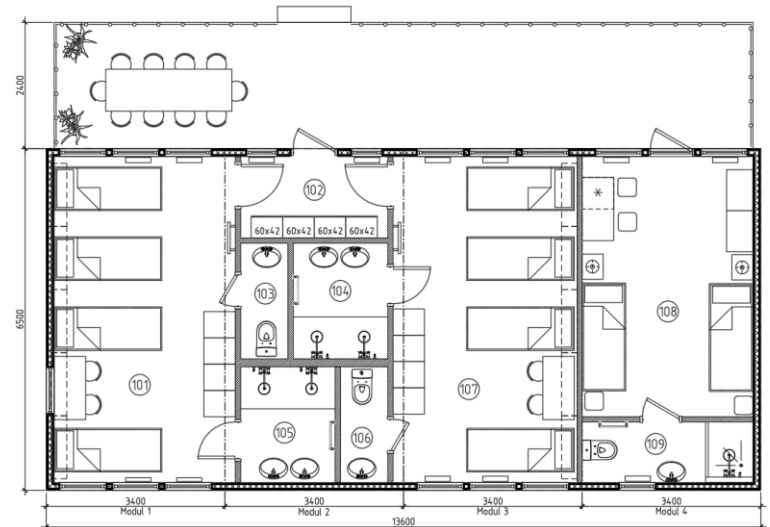
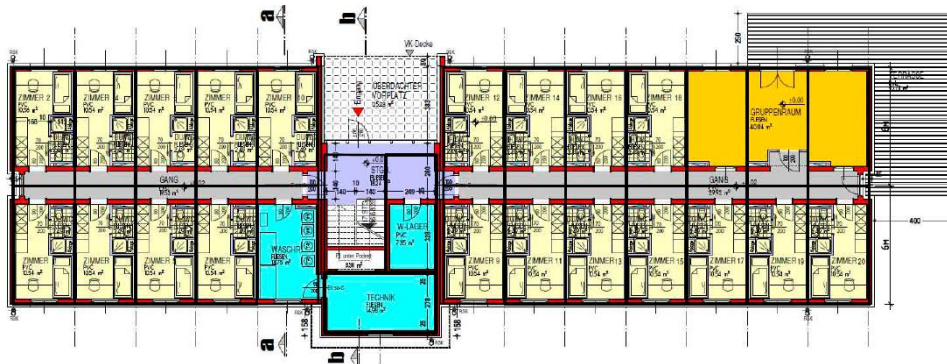
## Auxiliary complex to accommodate service personnel

- Area for recreation and temporarily accommodation of staff
- Shower cabins and bathrooms for personnel
- Catering area for personnel
- Areas for changing clothes and keeping of personal belongings for the staff



## Auxiliary complex to accommodate service personnel

- May include any needed number of modules
- May be installed as 1 or 2 floors temporarily buildings
- Allow to change (increase or decrease) the number of modules during resort operation





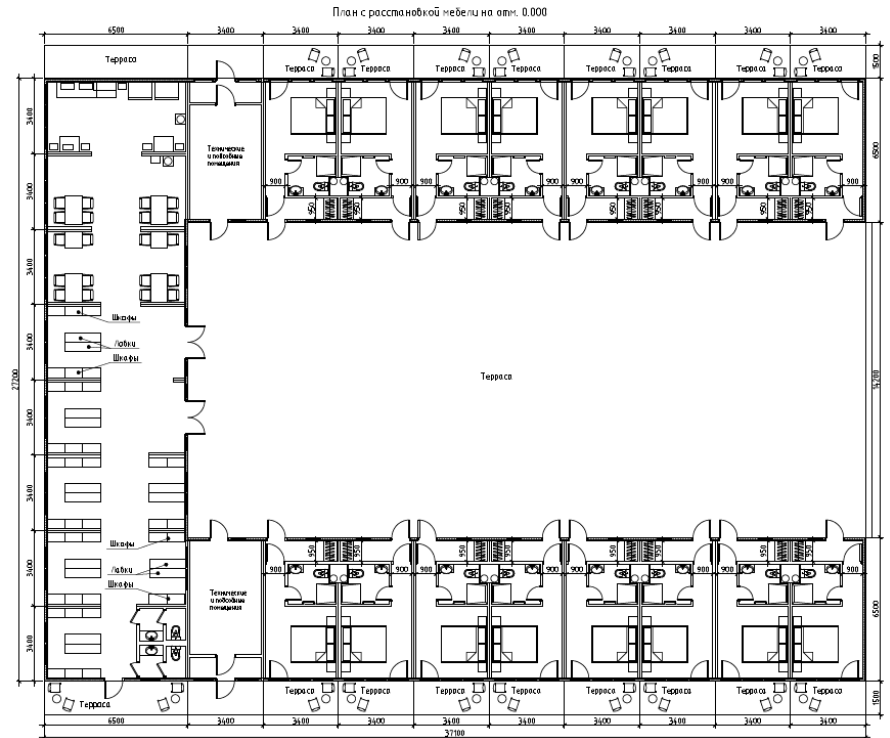
## Block-modular hotels

---

**Total square - 575 m2**

- Hotel rooms of 12 m2 square with single or double beds
- Recreation area with machines vending foods and beverages
- Self-service zone: tea, coffee, water coolers
- Lockers for ski and snowboarding equipment with changing benches
- Private patio
- Barbeque zone

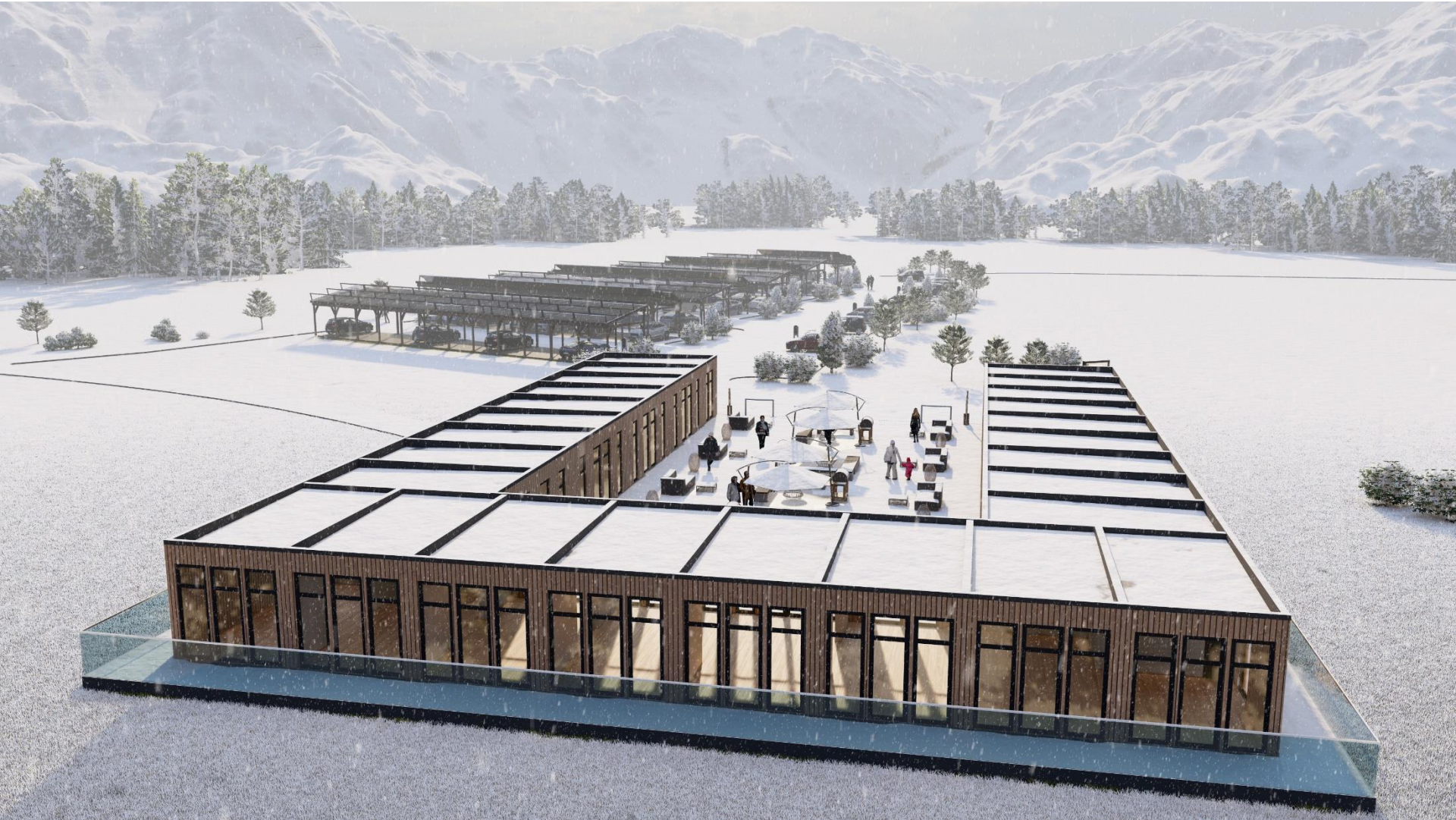
**It is possible to combine rooms for families accommodation**













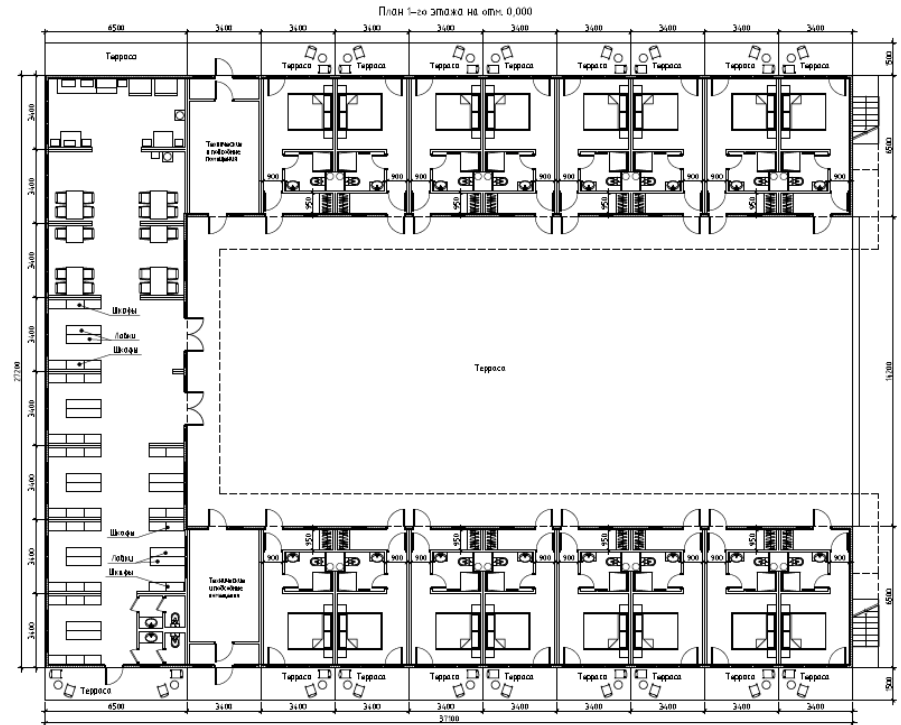


**Total square - 1150 m2**

- Hotel rooms of 12 m2 square with single or double beds
- Recreation area with machines vending foods and beverages
- Self-service zone: tea, coffee, water coolers
- Lockers for ski and snowboarding equipment with changing benches
- Private patio
- Barbeque zone

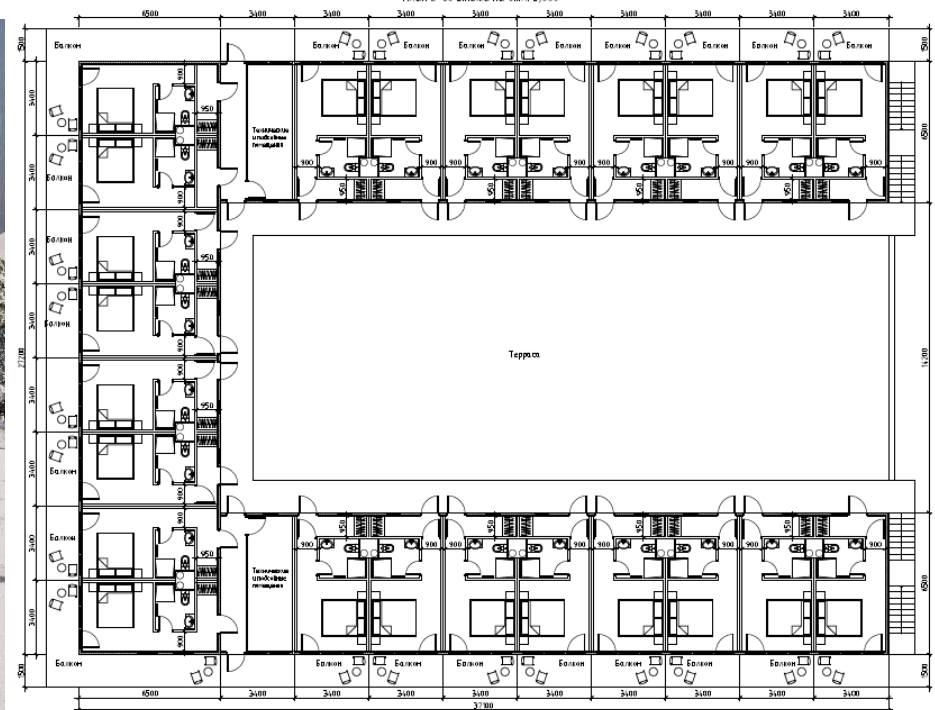
**It is possible to combine rooms for families accommodation**

1 (ground) floor





План 2-го этажа на отм. 3,000















## Composition of elements

---

### **BASIS OF CONSTRUCTION**

- Modular mobile home consists of several separately transportable modules.
- The base of each module consists of a strong load-bearing frame made by welding with applied anti-corrosion coating.
- Модули стыкуются между собой на месте установки The modules are to be installed together on-site, and after mobile house is to be connected to the utilities communications.
- Modules are delivered to the site of installation in a full factory readiness.

### **FACADES FINISHING**

- The finishing includes an outer OSB3 metal sheets 12 mm thick to be installed on the frame, painted with a special primer-paint and covered of a high quality wooden planks (for overall an aesthetic appearance of our mobile house)

### **GLAZING**

- Оконные переплеты из утепленных ПВХ профилей, с остеклением двухкамерным стеклопакетом, с открываемыми створками.

### **ENTRANCE GROUP**

- The entrance door block is made of high quality insulated PVC profiles with double-glazed windows and equipped with key lock.

### **INTERIOR DOORS**

- Door blocks are equipped with plat bands, fittings and locking devices (allowing to lock rooms from inside the premises).

### **HEAT INSULATION**

- Thermal insulation for walls is made from basalt fiber boards (100mm) with wooden trim (inside and outside).
- Roof: thermal insulation is made from slabs based on basalt fiber (200mm).
- Floors: thermal insulation is done from basalt fiber boards and XPS boards (100mm).
- A windproof coating is mounted under the outer finish, as well a vapor barrier membrane is installed under the interior finish

### **WATERPROOFING**

- To prevent moisture from entering the houses's structure, solid waterproofing is mounted on the power frame of the roof from above.
- On the floor of a module, over the load-bearing crate of the base, a leveling coating of cement-bonded particle boards or screed was installed and finished with a moisture-resistant laminate or ceramic tile
- Wet rooms are provided with additional waterproofing



### HEATING

- Floor heating in wet areas with sensors and temperature control
- Electric heating radiators with temperature control

### COOLING

- Split air conditioning system with control

### WATER SUPPLY AND SEWERAGE

- Concealed installation of water supply and sewerage systems
- Points of connection to external utilities systems are provided

### ELECTRIC DISTRIBUTION

- Concealed installation of power supply systems
- Sockets and switches are installed
- External and internal power supply control panels are installed

### LOW-VOLTAGE CABLING SYSTEMS

- Hidden installations of TV and Internet cables

### FIRE SAFETY

- Fire detecting systems with sirens are installed
- Modular mobile houses are equipped with manual fire extinguishers

### FURNITURE

- Living room: sofa, dining table, dining chairs, wardrobe
- Bedroom: bed, mattress, wardrobe
- All rooms are fitted with curtains

### SANITARY WARE

- Shower cabin With tray and spoiling system
- Sinks
- Toilet assembly, with micro lift seat
- Bathroom furniture
- Mirror with lights
- Towel dryer (electric)
- Water heater

### KITCHEN WARE

- Kitchen set with sink
- Cooking hobs
- Microwave oven
- Refrigerator

### LIGHTING

- Internal lighting is installed
- External lighting for façades is installed



Modular Mobile Houses  
Video presentation



[www.scadtech.ru](http://www.scadtech.ru)